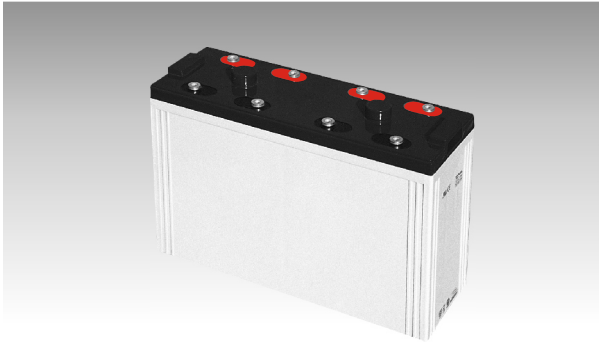
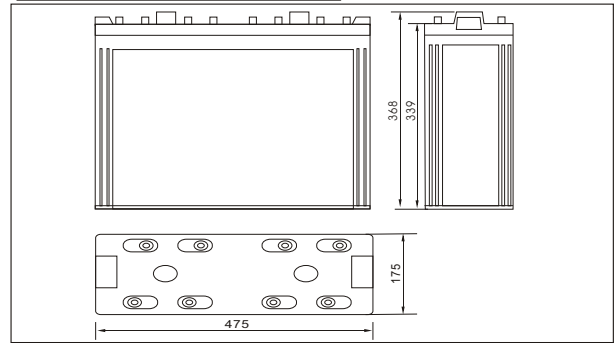




## SW210000E(2V1000AH)



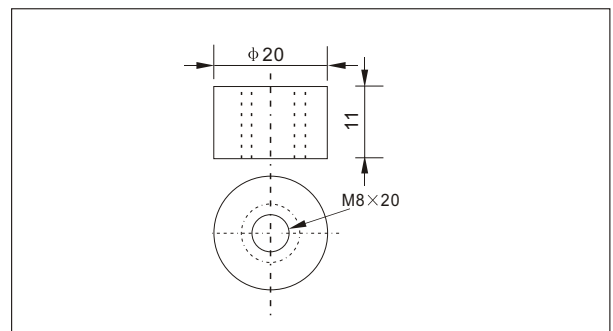
### ● Outer dimensions (mm)



### ● Specifications

Nominal Voltage		2 V
Rated capacity (10 hour rate)		1000 Ah
Dimensions	Total Height	368mm (14.5 inches)
	Height	339mm (13.4 inches)
	Length	475 mm (18.7 inches)
	Width	175 mm (6.89 inches)
Weight Approx		64 Kg (140.8 lbs)

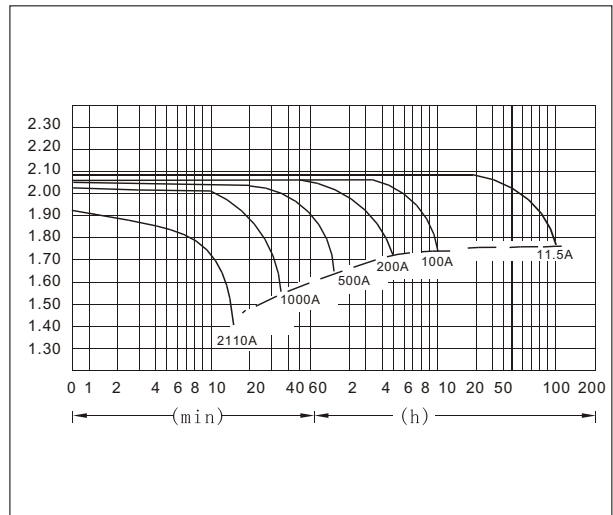
### ● Terminal Type (mm)



### ● Characteristics

Capacity 25°C(77°F)	10 hour rate(100 A)	1000 AH
	5 hour rate(160A)	800 AH
	1 hour rate(550A)	550 AH
	1.5 hour discharge to 1.75 V	400 A
Internal Resistance	Full charged Battery at 25°C(77°F)	1.5 mΩ
Capacity affected by Temperature (10hour rate)	40°C(104°F)	102%
	25°C(77°F)	100%
	0°C(32°F)	85%
	-15°C(5°F)	65%
Self-Discharge at 25°C(77°F)	Capacity after 3 month storage	91%
	Capacity after 6 month storage	82%
	Capacity after 12 month storage	64%
Terminal	T20	
Charge (constant Voltage)	Cycle	Initial Charging Current less than 250 A Voltage 2.35-2.40V
	Float	Voltage 2.25-2.30V

### ● Discharge Curves 25°C(77°F)



**Constant Current(Amp) and Constant Power(Watt) Discharge Table at 25°C(77°F)**

Time		10min	30min	1h	3h	4h	5h	8h	10h	20h	50h	100h
1.60V	A	2110	1140	600	257.0	200.0	165.0	116.3	105.0	56.70	23.6	12.1
	W	3905	2036	1158	496	386	318	224	203	109.4	46.8	24.0
1.70V	A	2050	1110	564.0	250.0	195.0	162.0	113.8	102.4	55.30	22.8	11.8
	W	3756	2017	1089	483	376	313	220	198	106.7	45.2	23.3
1.75V	A	1959	1056	546	244.0	192.0	160.0	113.0	100.0	54.60	22.4	11.5
	W	3640	1903	1054	471	371	309	218	195	105.4	44.5	22.8
1.80V	A	1830	1021	528	238.0	189.0	156.0	110.0	97.5	54.00	22.0	11.4
	W	3498	1832	1008	462	363	303	213	194	104.8	43.7	22.7
1.85V	A	1680	940	497	230.0	183.3	152.0	107.0	95.00	51.30	21.6	11.0
	W	3438	1817	981	456	361	301	212	188	101.7	42.8	21.8